

# 2022 Education Department Highlights

<https://stroudcenter.org/education>

<https://wikiwatershed.org>

<https://leafpacknetwork.org/>

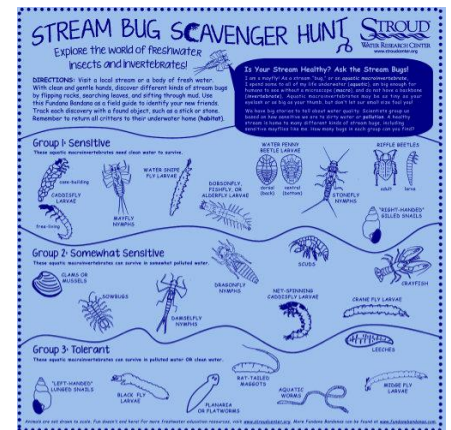


## PROGRAMMATIC SUCCESSES

- Total number of direct contacts: **7,964**
  - **5,043** (63 %) youth and **630** adults (8 %) in K-12 Student Programs
  - **14** (<1 %) in College Level Programs
  - **802** (10 %) in Training & Professional Development Events
  - **561** (7 %) at Community Engagement Events
  - **928** (12 %) at Conference & Event Presentations; **19** presentations
- **223,240+** indirect education impacts in 2022 through our digital resources
- **182** programs: **52** onsite, **72** off-site, **9** canoeing, **32** virtual/online, and **15** mobile lab
- **248** program contact days, **75** different schools and organizations
- Participants from **14** U.S. states (AZ, CA, MD, DE, NJ, IL, OR, PA, GA, SC, NC, NY, VA, WV)
- **43** training and professional development workshops
- **8** businesses donated through the PA EITC tax credit program to support public school education
- **1,841** subscribers to our e-news which was sent **9** times in 2022
- **1,126** subscribers to our e-news for Leaf Pack Network


## PROJECT HIGHLIGHTS

- **22** new grants, awards, and donations supporting education projects
- Teamed up with FundanaBandana.com to create a Stream Bug Scavenger Hunt bandana.
- Created a hybrid delivery model of the Scouts BSA Fish and Wildlife Management badge and piloted our first program partnering with Chester County Council, BSA.
- With funding support from the School District of Philadelphia for After School Enrichment programs, we are providing professional development opportunities, model lessons, and instructional supplies for a cohort of teachers leading before and after-school environmental and outdoor education clubs.
- Initiated a dedicated purpose of building bonds with Indigenous communities including the Seneca Nation of Indians (NY) and the Lenape Indian Tribe of Delaware to assist them with freshwater science and education and to learn from Indigenous communities how we can all better connect and become responsible stewards of water and the Earth.
- The new Watershed Education Mobile Lab was unveiled at World Water Day and has since traveled 3,000+ miles to deliver education programs!



### Accessible Watershed Education

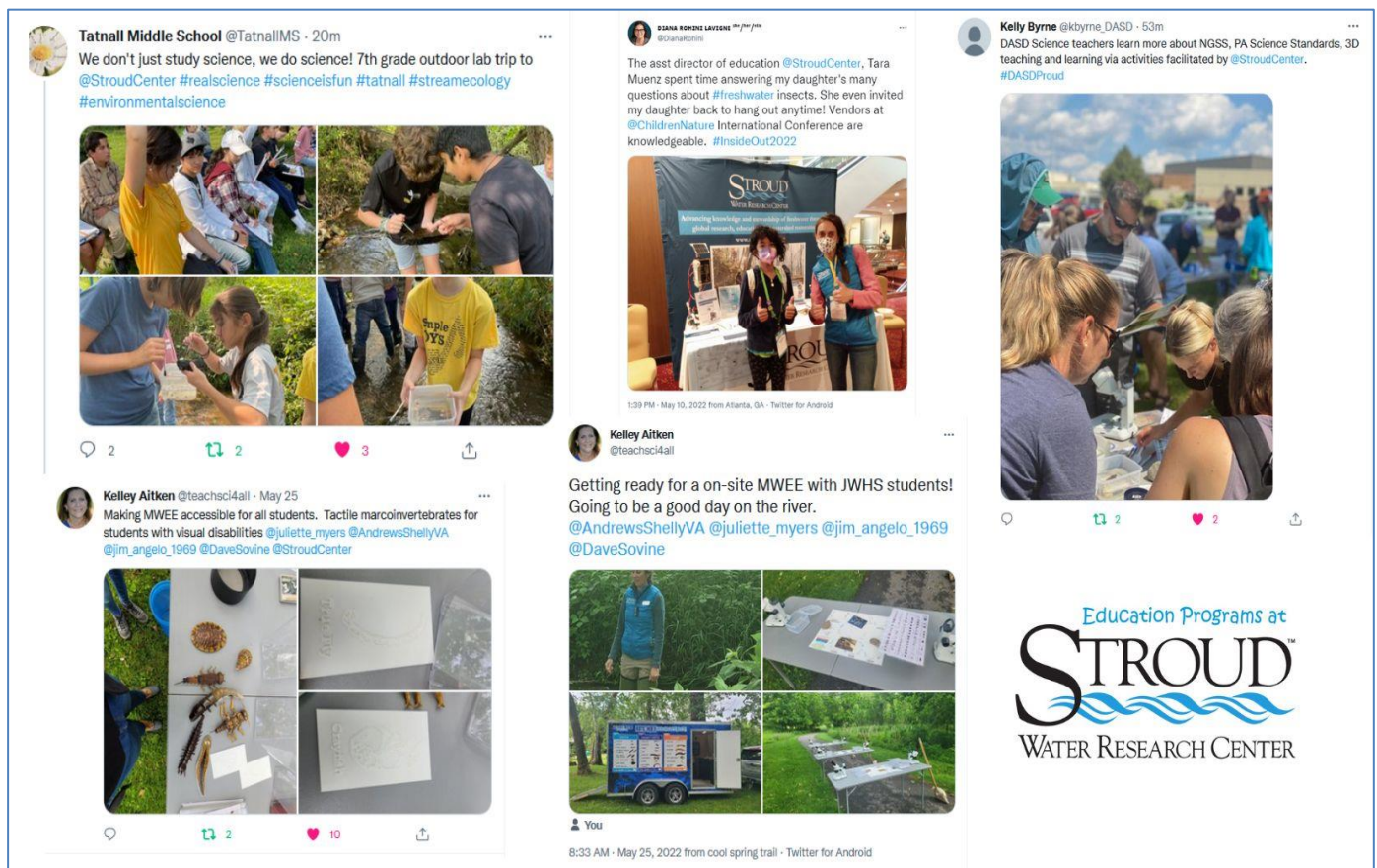
Stroud Water Research Center officially unveiled its mobile lab during its World Water Day event in March 2022. As of December, it has traveled over 3,000 miles across four states and made nearly 1,300 participant interactions.



#### MOBILE LAB INTERACTION POINTS

- Tribal Nations
- Community Events and Conferences
- Teacher Professional Development
- School, Scout, and Migrant Groups

## EDUCATION PROGRAM FEEDBACK



## AWARDS & RECOGNITIONS

- 2021 American Association for the Advancement of Science, Prize for Excellence in Hands-on Science Books finalist for *Creek Critters*.
- The Pennsylvania Meaningful Watershed Educational Experience (MWEE) Ambassador Training Program was honored with the outstanding environmental education award in 2020 by the Pennsylvania Association of Environmental Educators
- WikiWatershed® Toolkit receive the Sustainable Business Network (SBN) of Greater Philadelphia's Excellence in Green Stormwater Infrastructure (GSI) Award for Technological Innovation in 2019 and was also awarded the 2017 Governor's Award for Excellence by the Pennsylvania Department of Environmental Protection.
- The education department was recognized as the Outstanding Environmental Education Program by the Pennsylvania Association of Environmental Educators in 2015.

**The education department includes 19 educators and celebrates 30 years delivering watershed education!**